

Shopping Centers • Commercial • Retail • Restaurants • C-Store/Fuel • Churches • Remodels

HILBERS **INCORPORATED**

■ ■ ■ ■

CONTRACTORS & ENGINEERS

WE BUILD STRUCTURES
AND RELATIONSHIPS
TO LAST



General Contracting • Facility Maintenance • Tenant Improvement
Design Build • Pre-Construction • Construction Management

From our beginnings in 1962 to date,
our philosophy of trust through
quality workmanship has
never wavered.



Gauche Aquatic Park - Groundbreaking / Complete

Since our beginning in 1962, our reputation has been a key business asset, it has been and continues to be fundamental to our success. It gives our customers, employees, partners, suppliers, investors, and the many communities that we serve the confidence to trust us with their business. As President and CEO, I am committed to continuing this legacy of excellence.

Our dedicated staff is made up of experienced professionals; from the owners to the project managers, estimators, field superintendents, architectural designers, engineers, and office support personnel. Together, these professionals make up the Hilbers team—a team committed to ensuring that every project is completed to Hilbers standards with exceptional workmanship, quality materials, and by employing innovative building techniques combined with modern management practices for exceptional results.

Our accomplishments remind me of how proud and privileged I am to serve as the leader of the Hilbers team. Over the past 45-plus years, we have evolved from a small local firm with a focus on custom homes to a highly respected organization with a national presence, providing construction services for everything from commercial to agriculture.

I, and the entire Hilbers team, welcome the opportunity to share more information about us with you and how we can collaborate with you on your next project.

Kurt Hilbers, President



• **Our Promise as a Commercial Contractor:** is to build community value into every project while delivering professional expertise, exceptional customer service and quality construction.

• **Core Values:**

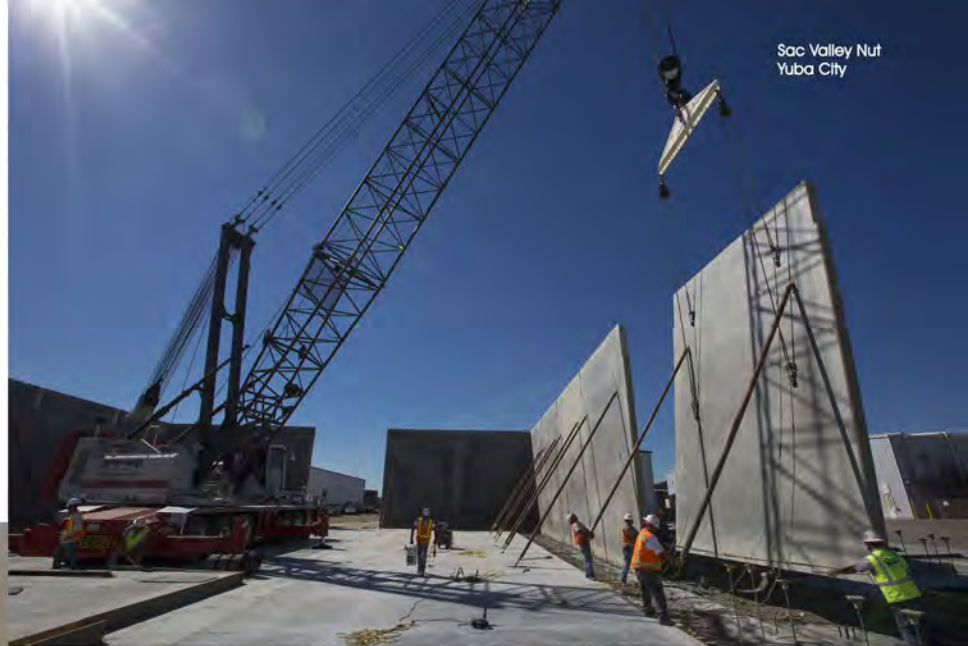
• **Relationship** - People are our number one priority. We build strong long-lasting relationships by treating everyone we work with, from customers, vendors and strategic partners to our employee's, with respect; taking time to listen and interpret their needs, keeping open and direct communications, and delivering on our promises.

• **Consistent** - You can depend on us. Every Hilbers' customer and project will receive the highest level of service and achieve the same high quality results, delivered on time, every time.

• **Quality - Expect it.** We give strict attention to detail and provide quality materials and craftsmanship, delivering exceptional results with maximum value.

• **Performance - We deliver.** We treat every project according to its needs and will do whatever it takes to get it done on time and within budget, while maintaining the highest level of industry and ethical standards.

ABOUT US



CONSTRUCTION SERVICES

- Design - Build
- Preconstruction
 - Budgeting, estimating, constructability review, and cost analysis
- General Contracting
- Remodeling and Tenant Improvements
- Construction Management
- LEED Consulting
- Facility Maintenance
- Safety

OUR MARKETS

Retail • Restaurant • Health Clubs • Grocery • Gas Stations • Medical Office • Churches • Public Works • Agriculture



St. John's Episcopal
Roseville



NorthCreek Church
Walnut Creek

CHURCHES

VISION: Assisting ministries to advance a project from "vision" to completion is Hilbers' true passion. From flat or sloped-floor sanctuaries to gymnasium facilities for community outreach to education space for your church's growing youth department, Hilbers can meet your construction needs.

Hilbers is also an exclusive regional builder/partner for "Building God's Way" – a national program that provides a "Network of Kingdom Building Services". To learn more about this program, please check out bgwservices.com.

NorthCreek Church Walnut Creek, CA

This 70,000 sq. ft. pre-engineered steel and stucco structure adds much to this existing dynamic church. Completed in June 2008, it consists of a sanctuary, kitchen, offices, classrooms, and a fireplace in the conference room. The classrooms are being used for the K-8 academy that the church operates.

"Building a new worship center has been a huge project for us. We needed a contractor who understood our unique challenges. With Hilbers we found a caring company that has truly become part of our church family."

Pastor Jeff Whitney,
Yreka Nazarene Church



Escondido Adventist School
Escondido



Escondido Adventist Church
Escondido



Our Lady of the Snows
Almanor



St. John's Episcopal
Roseville

Whisky Hills Lofts
Sacramento



COMMERCIAL CONSTRUCTION

California Water Service Co.
Marysville



Clark Pest Office
Yuba City



Greenhaven Corporate Center
Sacramento



KIA Dealership
Yuba City



QUALITY CONSTRUCTION

We build every building as if it were our own with exceptional workmanship, quality materials, innovative building techniques, and modern management practices. We use the most reputable subcontractors in the industry and our structures are built to last.

GROCERY



Walmart Neighborhood Market
Vallejo



Woodlands Market
Tiburon



New Earth Market
Yuba City

New Earth Market: Local families investing in Yuba City had Hilbers Inc. construct a modern health food market. This project included site work for future buildings, and a future 80,000 sq ft health club.



New Earth Market
Yuba City

"We are extremely glad that we selected Hilbers Inc. to be part of our building team. When we were looking for a general contractor we were looking not only for a contractor but a 'team member'. Hilbers has been true to their promise, delivering a quality project. They have been great to work with."

Kevin Cotter,
Managing General Partner
New Earth Market
20,000 sq. ft. Grocery Store



New Earth Market
Yuba City

Arco/Am-Pm/Burger King
Winters



Tower Market / Fuel
Chico



FUEL STATION / C-STORE

DIVERSITY: Hilbers Inc. has a significant and diverse portfolio of Fuel Stations / C-Stores. Each site has a unique look and style which enhances and reflects its place in the community. The latest industry and technological advances are used in the materials and finishes, with interiors that vary in size of retail space and function.

Pacific Fuel
Shingle Springs



Raley's Aisle 1
Reno

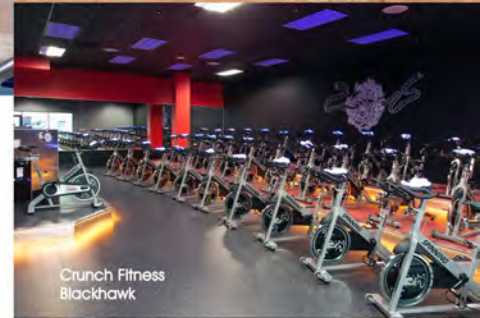


AutoMall Parkway
Fremont





Health and Fitness Centers: Hilbers Inc. has a long history with this type of construction. From large, spacious facilities to small intimate spaces, a health club involves many types of construction. Interior and exterior pools/spas, saunas, large shower and locker rooms have all been built. From national corporations to independent local health clubs, we have the experience and know-how to get your project completed.



24Hr Fitness
Walnut Creek

"When I was looking for a contractor to partner with my #1 priority was finding a general contractor that I could trust. My contractors must deliver quality projects in a timely manner. Hilbers delivers projects on time and on budget and that is why Hilbers is my contractor".
Fenn Hall,
Vice President - 24Hour Fitness



UFC / BJ Penn
Honolulu



UFC / BJ Penn
Honolulu

HEALTH CLUBS / Fitness Centers

Ampla Health Facility
Yuba City



Ampla Health

Completed in early summer of 2011, this medical facility is just one of multiple projects Hilbers Inc. has built or remodeled for the Ampla Health company.



Rideout Health Cancer Center
Marysville



MEDICAL

ManorCare
Citrus Heights



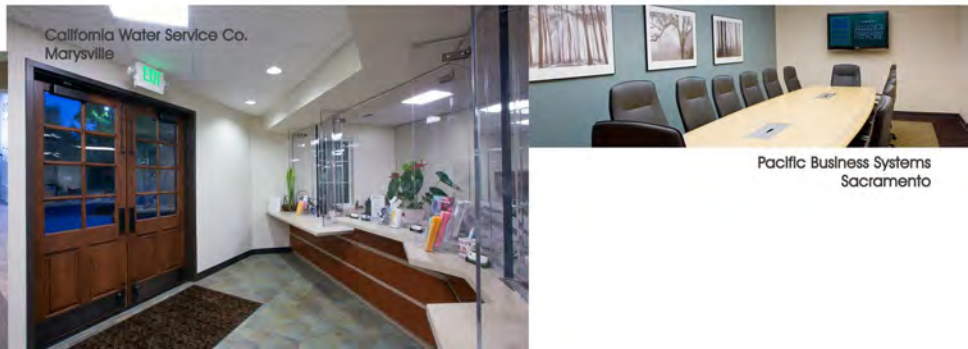
Relationship: Those trusted with the health and well being of a community select Hilbers Inc. as their trusted general contractor.

Greenhaven Corporate Center
Sacramento



OFFICES

Attention to detail is of high importance for both the interiors and exteriors of any project. Quality construction can set your office apart from your competition, just as our attention to every detail sets Hilbers Inc. apart from other contractors.





Truckee Fire
Truckee

Tahoe Fire
Lake Tahoe



Scott Valley Hellbase
Scott Valley



Nervino Fire Station
Beckworth



PUBLIC WORKS & SCHOOLS

Cal Fire Stations
Numerous Cal Fire Stations throughout the state were built by Hilbers Inc. the last couple of years. Government guidelines, policies and directives pose no problem for our extensive experience in public works projects.

Laguna Waste Water
Santa Rosa



Laguna Waste Water
Santa Rosa



PUBLIC WORKS: Whether it is schools, parks, roadways or any other infrastructure construction, Hilbers has the diversity and depth of experience to complete even the most demanding of Public projects and keep them on time, on budget and still provide exceptional quality and value.



Sutter Union High School
Sutter

Sutter Union High School
Hilbers Inc. completed a multi phase project at this high school. Multi storied classroom building, gymnasium, with full cafeteria and ball fields were part of the scope. All completed during the school year.



Sutter Union High School
Sutter

Sutter Union High School
Sutter





Empire Nut
Colusa



RRP Conservancy
Zamorat



Noland Cold Storage
Marysville



Shoel Foods
Marysville

PRE ENGINEERED / AG BUILDINGS



Empire Nut
Colusa



Building with steel building systems has many benefits. Whether it is a matter of sustainability, design, or a fast construction schedule, pre-engineered building systems provide the right building for any need.

As a dedicated partner in the agricultural community, Hilbers is committed to not only meeting your expectations but protecting your investments. Hilbers Inc. has assisted many farmers, processors and packers by providing pre-engineered buildings as cost effective solutions for machine and equipment storage, cold storage, commodity bulk storage, food processing, and fumigation.



Clark Pest Control
Yuba City



Empire Nut
Colusa



Sac Valley Nut
Yuba City



Corner Bakery Cafe
Pleasant Hill



Famous Dave's BBQ
Salinas



Buffalo Wild Wings
Lynnwood



Cicada Cantina
Redding

RESTAURANTS Casual Dining

COMMITMENT: We believe that experience, communication and commitment are the reasons you want Hilbers Inc. to be your restaurant specialist.



Corner Bakery Cafe
Foster City



Sizzler Restaurant
Turlock

Chick-fil-A
Granite Bay



CUSTOMER SERVICE: Our customer-driven approach guarantees your satisfaction. At Hilbers we take the time to understand our clients' needs and wants in order to provide excellent customer service that constantly and consistently exceeds the customer's expectations.

"I have been dealing with (president) Kurt Hilbers since 1980. Hilbers has built six Applebee's and numerous Burger King Restaurants for me. They (Hilbers) have always delivered on their promises and stand behind their word every step of the way. I am a very happy, satisfied client."

—LEN ROHDE, OWNER/DEVELOPER
(AND RETIRED SAN FRANCISCO
49ER PLAYER)



McDonald's
Benecia



Chick-fil-A
Santa Rosa



Panda Express
Woodland

Chick-fil-A
Granite Bay



RESTAURANTS / Quick Serve

Panda Express
Woodland



Burger King
Marysville





1901 S St.
Sacramento

Rite Aid
Cameron Park



Chase Bank
Pinole



Best Buy Mobile
Hayward

We use a common-sense approach in retail store construction based on years of personal hands-on experience that extends from our field personnel to the president of the company. We treat every project according to its needs and will do whatever it takes to get it done on time and within budget, while maintaining the highest level of industry and ethical standards.

RETAIL

"This project was both complicated and required a great degree of communication and coordination.

The Hilbers team met these challenges and delivered a quality product – on time and within budget.

Their project management and supervision personnel handled the many changes professionally."

Patrick Conway
Construction Manager



Auto Zone
Red Bluff



Old Navy
Sacramento

SHOPPING CENTER



Yuba City Marketplace
Yuba City



Sutter Buttes Marketplace
Yuba City



Washington Square
Marysville



Watermark At Ellis Lake
Marysville

PERFORMANCE

We deliver. We treat every project according to its needs and will do whatever it takes to get it completed in a timely and efficient manner, while maintaining the highest level of industry and ethical standards.



WE BUILD STRUCTURES AND RELATIONSHIPS TO LAST

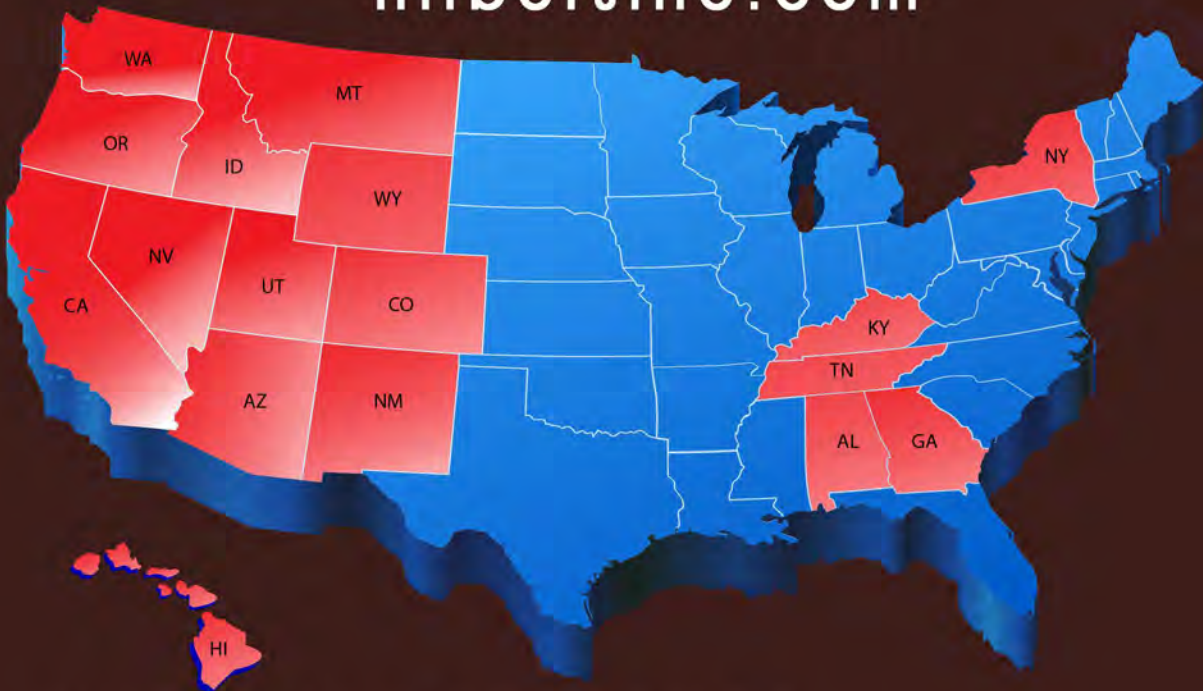
1210 STABLER LANE
YUBA CITY, CA 95993
P: 530.673.2947
F: 530.674.4141

1104 CORPORATE WAY
SACRAMENTO, CA 95831
P: 916.429.3246
F: 916.429.3241

13125 SHORELINE DR. SE
OLALLA WASHINGTON 98359
P: 253.509.9088
C: 360.621.6237

1720 GENERAL GEORGE PATTON DR.
SUITE D3
BRENTWOOD TN 37027
615.906.3891

hilbersinc.com



NATIONAL PRESENCE

* Red states are locations Hilbers Inc. is licensed to perform work in.